

(A) STRUCTURAL STEEL

1. ALL STRUCTURAL STEEL MEMBERS AND MISC. METALS SHALL CONFORM WITH THE FOLLOWING UNLESS OTHERWISE NOTED:

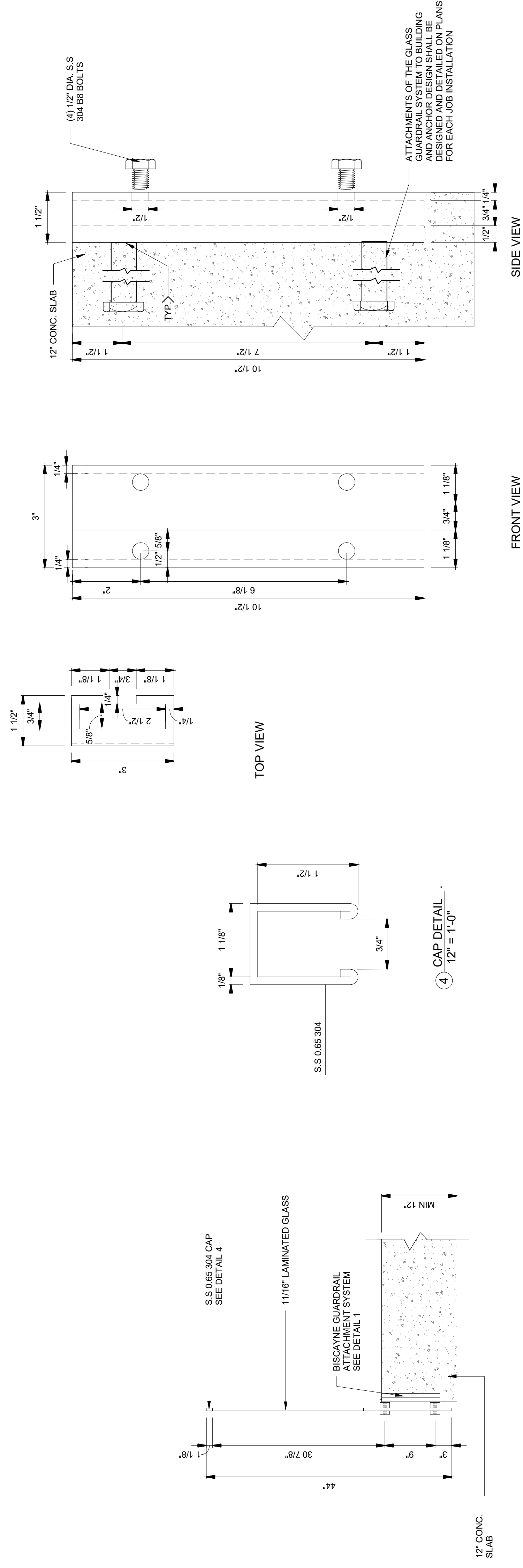
STRUCTURAL SHAPE	ASTM SPECIFICATION	MIN FY (KSI)
CHANNEL AND RAILS	A304	30
PLATE	A304	30
ANCHOR BOLTS	HEX HEAD F1554 GR.55	55
W/ WELDABILITY SUPPLEMENT S1	A193 B6	30

WELDED CONNECTIONS

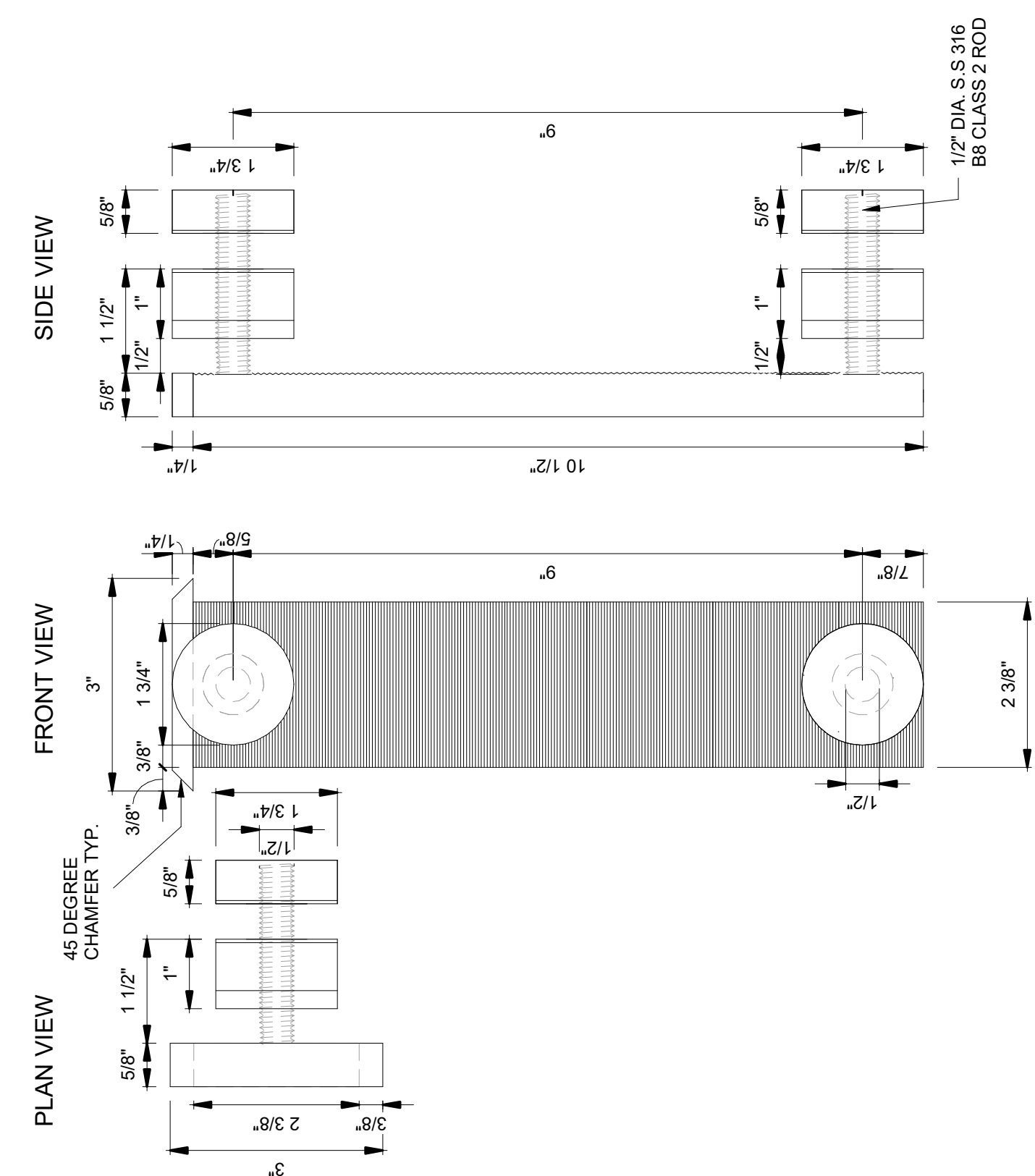
- ALL SHOP WELDING SHALL CONFORM TO THE LATEST EDITION OF THE STRUCTURAL WELDING CODE AWS D1.1, PUBLISHED BY THE AMERICAN WELDING SOCIETY (AWS). USE ELECTRODES CONFORMING TO AWS E1.6, E70XX SERIES. LOW HYDROGEN, U.O.N. SHOW ALL SHOP WELDS ON THE FABRICATION DRAWINGS AND ALL FIELD WELDS ON THE ERECTION DRAWINGS.
- ALL SHOP WELDERS, WELDING OPERATORS, AND TACKERS SHALL BE CERTIFIED ACCORDING TO AWS PROCEDURES FOR THE WELDING PROCESS AND WELDING POSITION USED AND CERTIFIED BY THE CBC.
- WELDED CONNECTIONS IN ALL AREAS EXPOSED TO THE WEATHER OR CHEMICAL CORROSION SHALL BE COATED WITH AN APPROVED WELDING ALL CONTACTING SURFACES AFTER STRUCTURED WELD HAS BEEN COMPLETED.
- STRUCTURAL SHOP WELDING SHALL BE DONE IN THE SHOPS OF A LADBS LICENSED APPROVED FABRICATOR.
- MIN. 1/8" WELDS SHALL BE USE U.N.O.
- ALL EXPOSED STRUCTURAL STEEL SHALL BE DOUBLE HOT-DIPPED GALVANIZED AFTER FABRICATION.

(B) GLASS

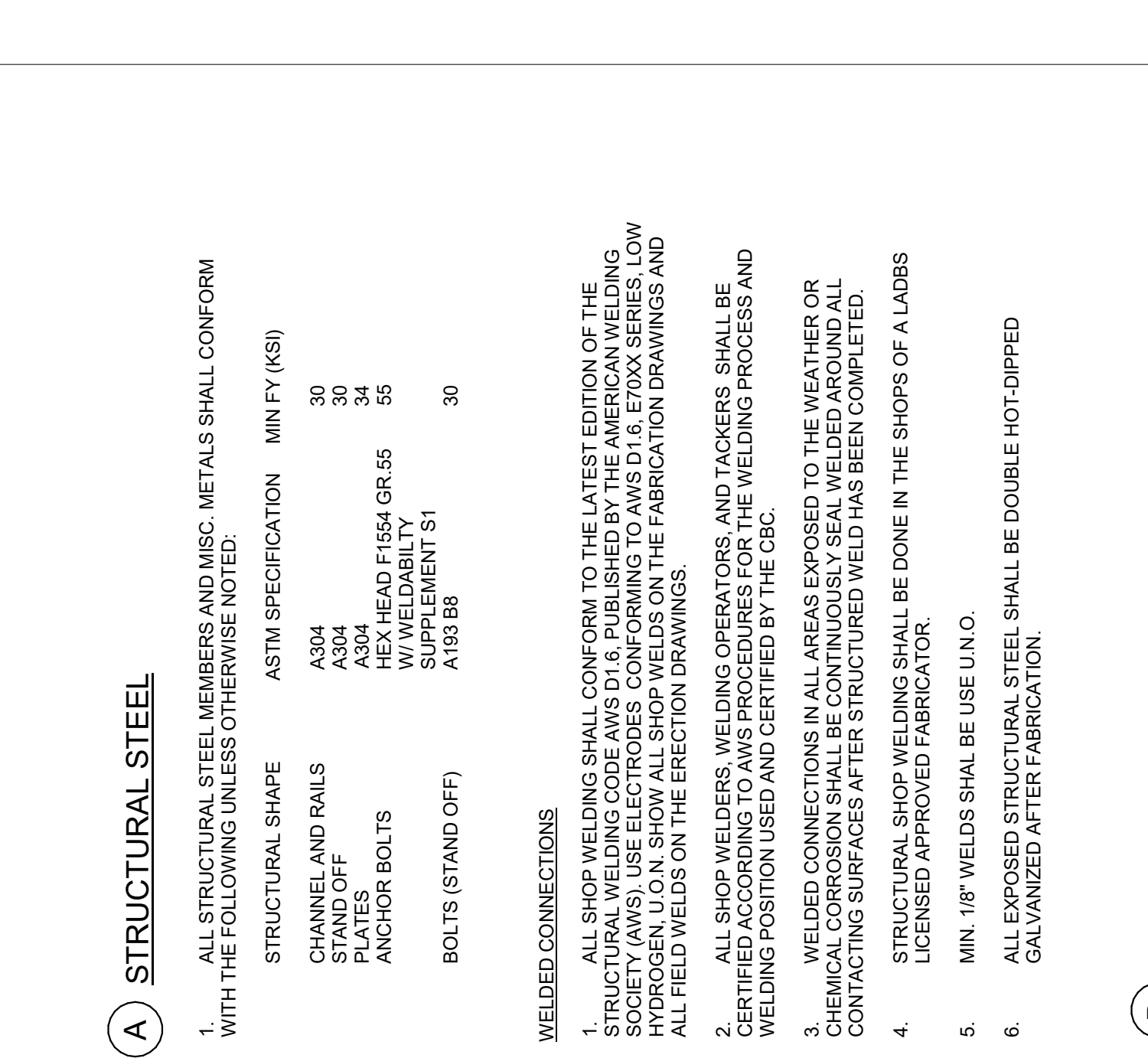
1. GLASS USED IN A HANDRAIL GUARDRAIL OR A GUARD SECTION IS LAMINATED GLASS CONSTRUCTED WITH A SENTRYGLASS INTERLAYER AND FULLY TEMPERED OR HEAT-TREATED GLASS AND COMPLY WITH THE PROVISIONS OF SECTION 2406.1.1 OF THE 2021 IBC. GLAZING IN RAILING IN-FILL PANELS IS AN APPROVED SAFETY GLAZING MATERIAL THAT CONFORMS TO THE PROVISIONS OF SECTION 2406.1.1



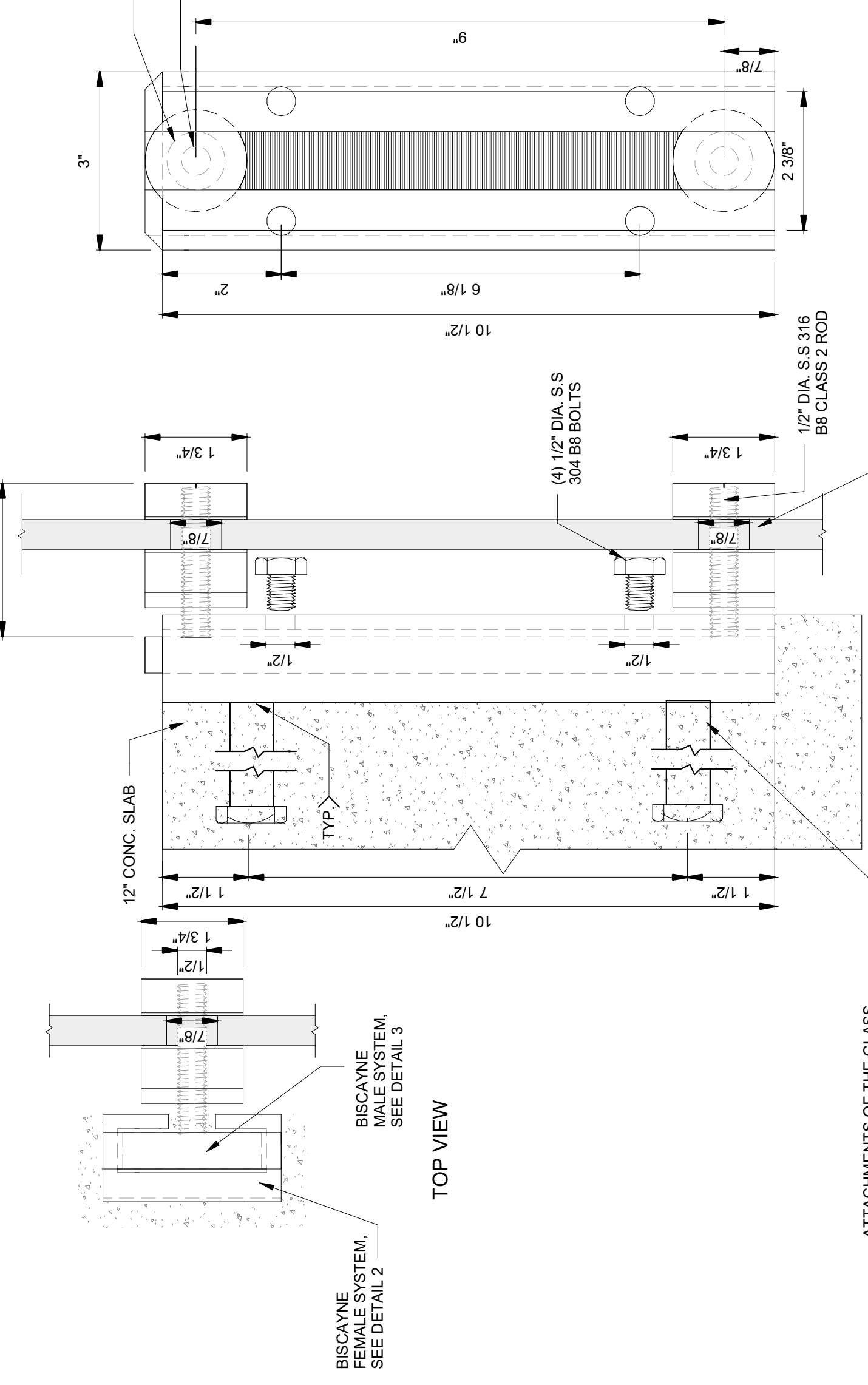
(0) BISCAYNE GUARDRAIL SYSTEM TO CONC. SLAB 12"
1" = 1'-0"



(3) MALE BISCAYNE SYSTEM CONC SLAB
12" = 1'-0"



(2) FEMALE BISCAYNE SYSTEM WOOD CONC. SLAB 12"
6" = 1'-0"



(1) BOTH ACCESSORIES BISCAYNE SYSTEM CONC. SLAB 12"
6" = 1'-0"

BISCAYNE SYSTEM

SK02

SHEET:

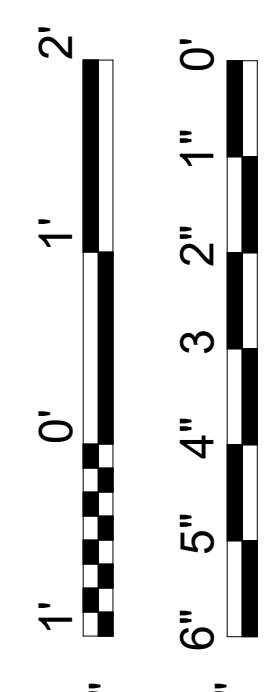
PROJECT DEVELOPER:

VISIONERING INC.
605 Delaney Ave., STE C
Orlando, Florida, FL 32801
Cell: (562) 713-0056



PROJECT ADDRESS:

SCALE: 1"=1'-0"



BISCAYNE SYSTEM CONC. SLAB 12"

REVISIONS / SUBMISSIONS

REVISIONS / SUBMISSIONS	A	B	C

A STRUCTURAL STEEL

1. ALL STRUCTURAL STEEL MEMBERS AND MISC. METALS SHALL CONFORM WITH THE FOLLOWING UNLESS OTHERWISE NOTED:

STRUCTURAL SHAPE	ASTM SPECIFICATION	MIN FY (KSI)
CHANNEL AND RAILS	A304	30
PLATE	A304	34
ANCHOR BOLTS	HEX HEAD F1554 GR.55	55
	W/ WELDABILITY SUPPLEMENT S1	
BOLTS (STAND OFF)	A193 B6	30

WELDED CONNECTIONS

1. ALL SHOP WELDING SHALL CONFORM TO THE LATEST EDITION OF THE STRUCTURAL WELDING CODE AWS D1.1, PUBLISHED BY THE AMERICAN WELDING SOCIETY (AWS). USE ELECTRODES CONFORMING TO AWS D1.1 & E70XX SERIES. LOW HYDROGEN, U.O.N. SHOW ALL SHOP WELDS ON THE FABRICATION DRAWINGS AND ALL FIELD WELDS ON THE ERECTION DRAWINGS.

2. ALL SHOP WELDERS, WELDING OPERATORS, AND TACKERS SHALL BE CERTIFIED ACCORDING TO AWS PROCEDURES FOR THE WELDING PROCESS AND WELDING POSITION USED AND CERTIFIED BY THE CBC.

3. WELDED CONNECTIONS IN ALL AREAS EXPOSED TO THE WEATHER OR CHEMICAL CORROSION SHALL BE COMPLETELY WELDED. WELDED JOINTS SHALL CONTACTING SURFACES AFTER STRUCTURED WELD HAS BEEN COMPLETED.

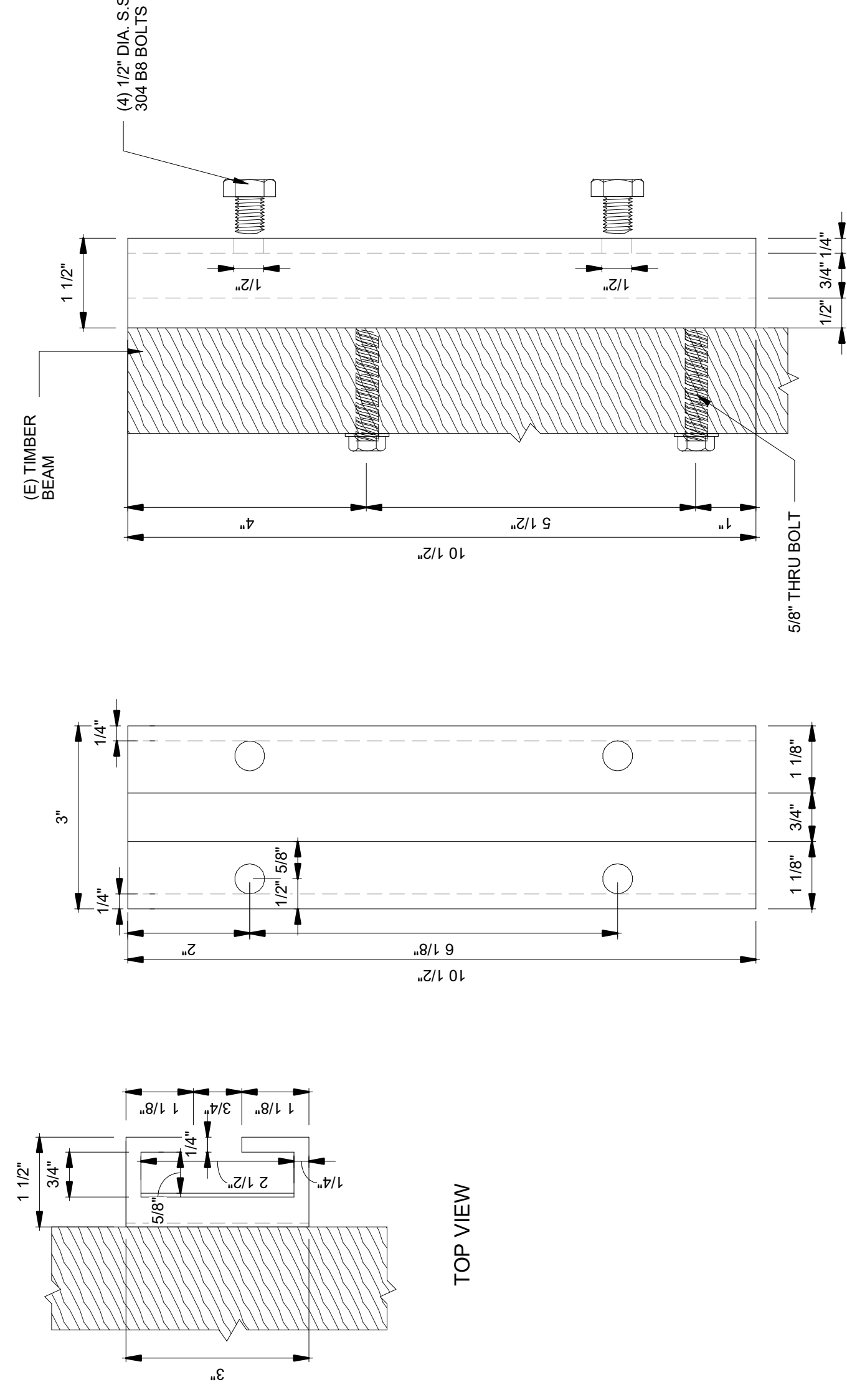
4. STRUCTURAL SHOP WELDING SHALL BE DONE IN THE SHOPS OF A LADBS LICENSED APPROVED FABRICATOR.

5. MIN. 1/8" WELDS SHALL BE USE U.N.O.

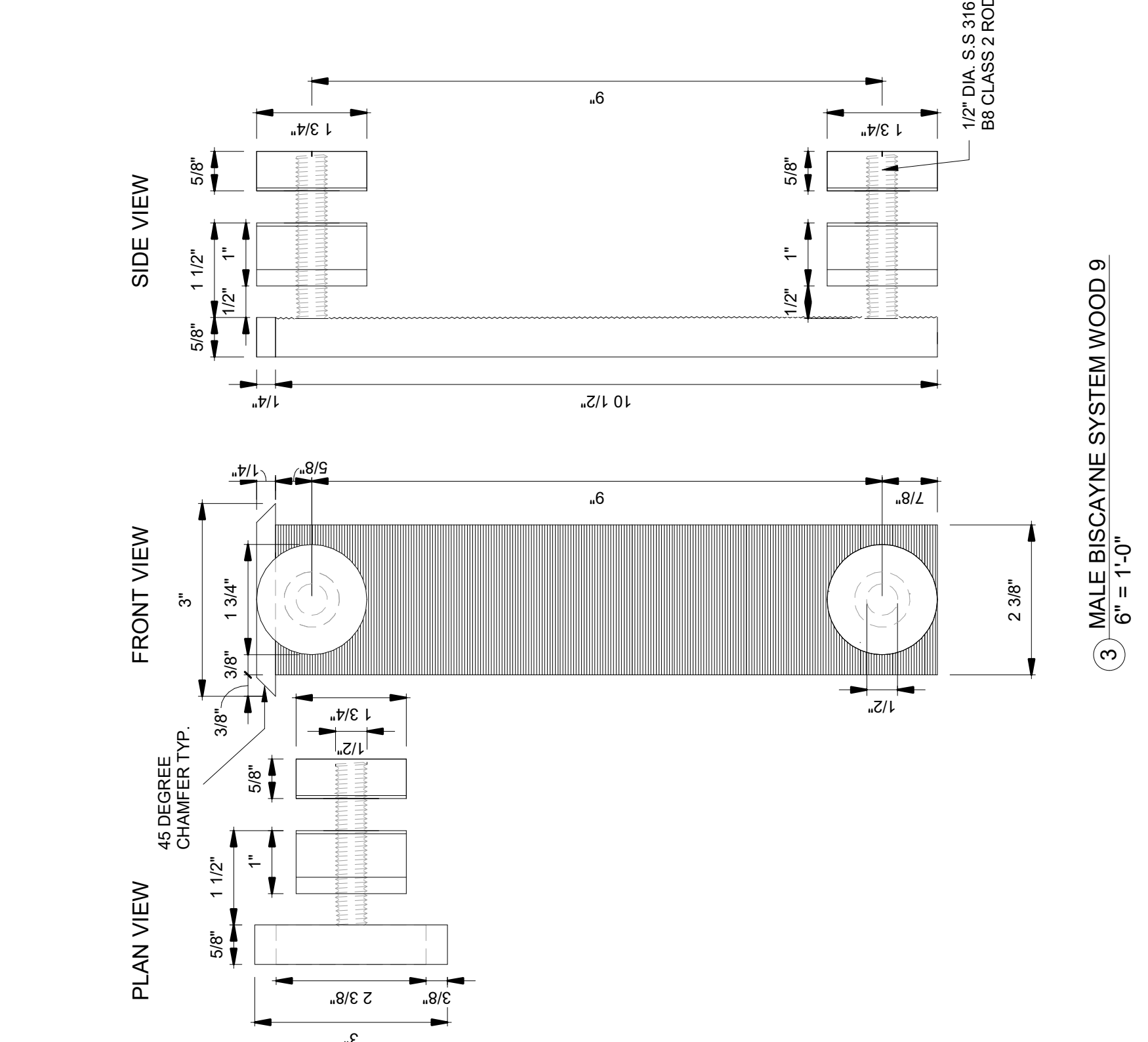
6. ALL EXPOSED STRUCTURAL STEEL SHALL BE DOUBLE HOT-DIPPED GALVANIZED AFTER FABRICATION.

B GLASS

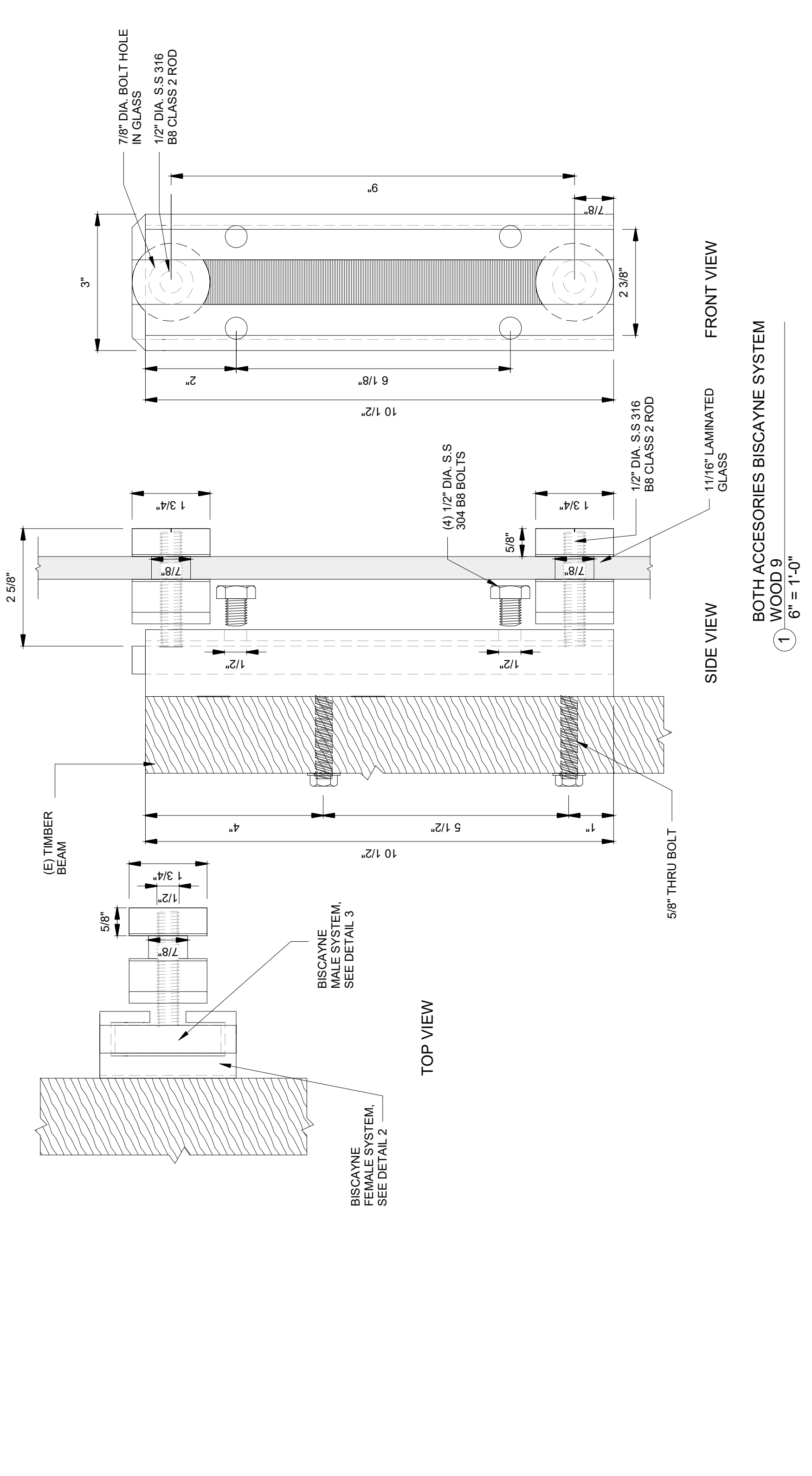
1. GLASS USED IN A HANDRAIL GUARDRAIL OR A GUARD SECTION IS LAMINATED GLASS CONSTRUCTED WITH A SENTRYGLASS INTERLAYER AND FULLY TEMPERED OR HEAT-TREATED LAMINATED GLASS AND COMPLY WITH THE PROVISIONS OF SECTION 2406.1.1 OF THE IBC. THE GLASS GLAZING IN RAILING IN-FILL PANELS IS AN APPROVED SAFETY GLAZING MATERIAL THAT CONFORMS TO THE PROVISIONS OF SECTION 2406.1.1



(2) FEMALE BISCAYNE SYSTEM WOOD 9
6" = 1'-0"



(3) MALE BISCAYNE SYSTEM WOOD 9
6" = 1'-0"



BISCAYNE GUARDRAIL SYSTEM TO WOOD (9")
1" = 1'-0"

BOTH ACCESSORIES BISCAYNE SYSTEM WOOD 9
6" = 1'-0"

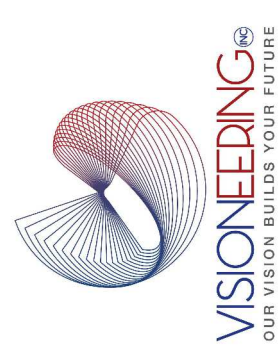
BISCAYNE SYSTEM

SHEET:

SK03

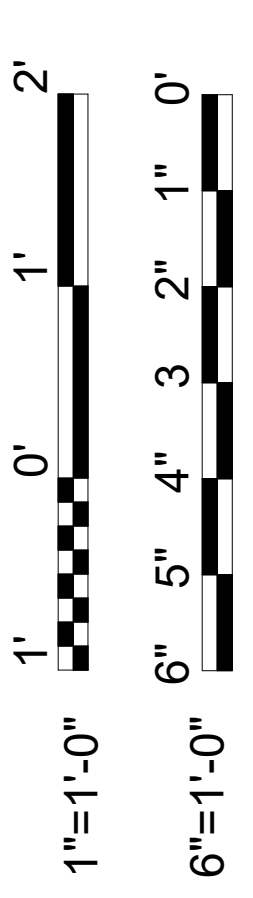
PROJECT DEVELOPER:

VISIONERING INC.
605 Delaney Ave., STE C
Orlando, Florida, FL 32801
Cell: (562) 713-0056



PROJECT ADDRESS:

SCALE:



PROJECT No.

BISCAYNE SYSTEM WOOD (9")

REVISIONS / SUBMISSIONS

REVISIONS / SUBMISSIONS	A	B	C